

ONWA[®]

MARINE ELECTRONICS



MODEL

KMR-7

7-inch Multi-Function Display with NMEA0183 Multiplexer and NMEA2000

- Can accept most major NMEA0183 sentences and NMEA2000 PGNs
- 6 display modes show the input NMEA0183 sentences or NMEA2000 PGNs in digital and graphic modes
- Provides 4 NMEA0183 input ports and 2 NMEA0183 output ports
- Mix and combine all 4 input NMEA0183 sentences into 2 NMEA0183 output sentences
- Weather alarm mode monitors the change of weather temperature and air pressure

Compass

Navigation

Wind

Highway

AIS

Weather

SPECIFICATIONS

Outout/Input (IEC61162-1)

**Input: 4x
NMEA0183**

Input port 1

- a) Support sentences: RMC, GGA, GLL, GSA, GSV, AAM, APA, APB, BOD, BWC, BWR, DBT, DPT, HDT, MTW, RMB, VTG, XTE, ZDA, MWD, VWR, VWT, MWV, XDR
- b) Baudrate: auto scan up to 115200

Input port 2

- a) Support sentences: RMC, GGA, GLL, GSA, GSV, AAM, APA, APB, BOD, BWC, BWR, DBT, DPT, HDT, MTW, RMB, VTG, XTE, ZDA, MWD, VWR, VWT, MWV, XDR
- b) Baudrate: 115200

Input port 3

- a) Support sentences: RMC, GGA, GLL, GSA, GSV, AAM, APA, APB, BOD, BWC, BWR, DBT, DPT, HDT, MTW, RMB, VTG, XTE, ZDA, MWD, VWR, VWT, MWV, XDR
- b) Baudrate: 115200

Input port 4

- a) Support sentences: RMC, GGA, GLL, GSA, GSV, AAM, APA, APB, BOD, BWC, BWR, DBT, DPT, HDT, MTW, RMB, VTG, XTE, ZDA, MWD, VWR, VWT, MWV, XDR, VDO, VDM
- b) Baudrate: 38400

**Output: 2x
NMEA0183**

Output port 1

- a) Output sentences: Selectable sentences among of the input sentences
- b) Support sentences: RMC, GGA, GLL, GSA, GSV, AAM, APA, APB, BOD, BWC, BWR, DBT, DPT, HDT, MTW, RMB, VTG, XTE, ZDA, MWD, VWR, VWT, MWV, XDR
- c) Baudrate: Selectable baudrate 4800, 9600, 19200, 38400

Output port 2

- a) Output sentences: Selectable sentences among of the input sentences
- b) Support sentences: RMC, GGA, GLL, GSA, GSV, AAM, APA, APB, BOD, BWC, BWR, DBT, DPT, HDT, MTW, RMB, VTG, XTE, ZDA, MWD, VWR, VWT, MWV, XDR, VDO, VDM
- c) Baudrate: 38400

NMEA2000 Tx PGN:

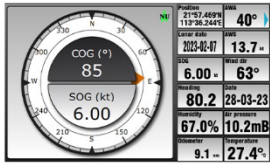
126992,129026,129540,128267,129029,127250,128259,129025,129539,130306,130310,130311,130312,129810,129809,129798,129794,129793,129040,129039,129038,129041,129802,129801,129795,129797,129811,129812

NMEA2000 Rx PGN:

126992,127237,127245,127488,127250,127489,128259,128267,129025,129026,129029,129038,129039,129040,129539,129540,129793,129794,129798,129809,129810,130306,130310,130311,130312,129041,129802,129801,129795,129797,129811,129812,129808,127252,130576

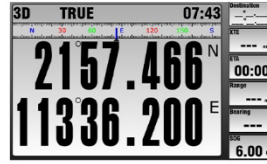
SCREEN NMEA SENTENCE(S) REQUIREMENT

Compass Screen



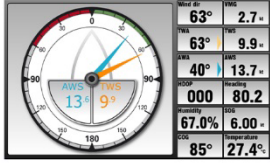
- + Minimum requirement: RMC or PGN129029
- + Additional: GLL, GGA, GSA, GSV
- + If "Head up" view mode is selected: HDT or HDG or PGN127250
- + If navigation data is available: APB, BWC, BWR, RMB

Navigation



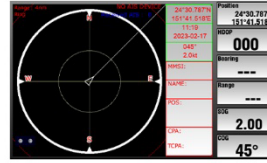
- + Minimum requirement: RMC, PGN129029
- + Additional: GLL, GGA, GSA, GSV
- + If navigation data is available: APB, BWC, BWR, RMB, PGN129284

Wind



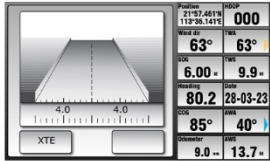
- + Minimum requirement: RMC, MWV, VWR, VWT, MWD, PGN129029, PGN130306

AIS



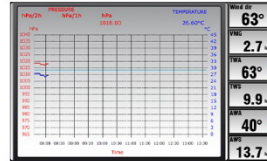
- + Minimum requirement: RMC, VDO, VDM
- + Minimum N2K requirement: 129793-129798, 129801, 129802, 129809, 129810

Highway



- + Minimum requirement: RMC, RMB, APB, BWC, BWR, PGN129029, PGN129284
- + Additional: AAM, BOD, XTE

Weather



- + Minimum requirement: RMC, XDR, PGN130310

Power Supply

Electrical:

10.5 – 32VDC

Protection:

Overcurrent, overvoltage, power transient and accidental reverse polarity protection

Environmental Conditions

Ambient Temperature:

-5°C to +55°C

Humidity:

93%±3% on 40°C

Waterproofing:

Display unit (front panel): IPX6

Equipment List

Standard:

Display unit KMR-7

Mounting brackets

Manuals (*quick start and quick installation manual*)

Standard accessories pack

(*one power/data cable, one data cable, 2 spare fuses, 4 mounting screws*)

DIMENSIONS

