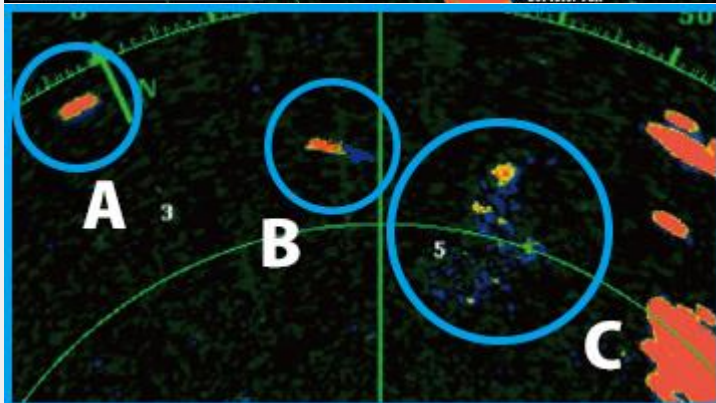
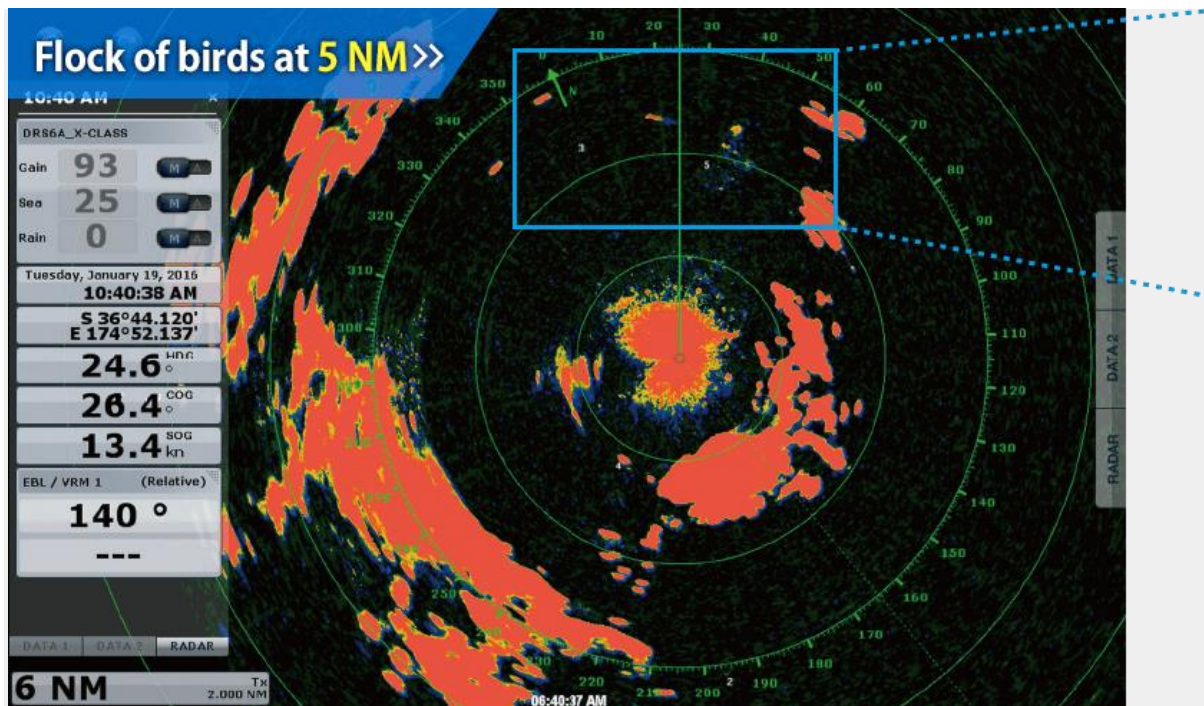
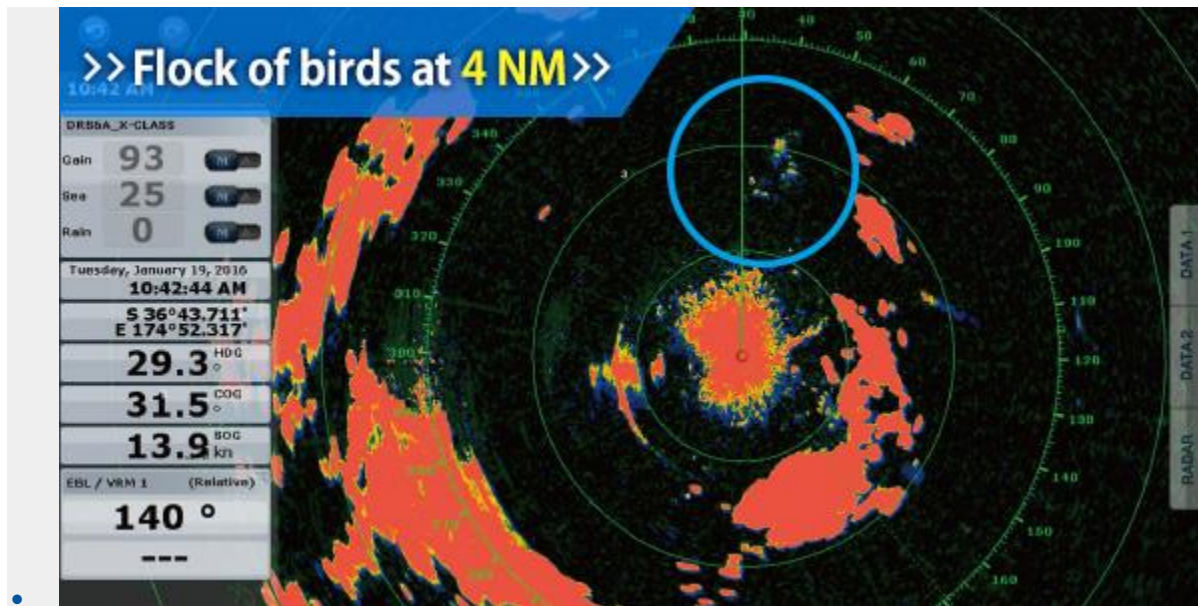


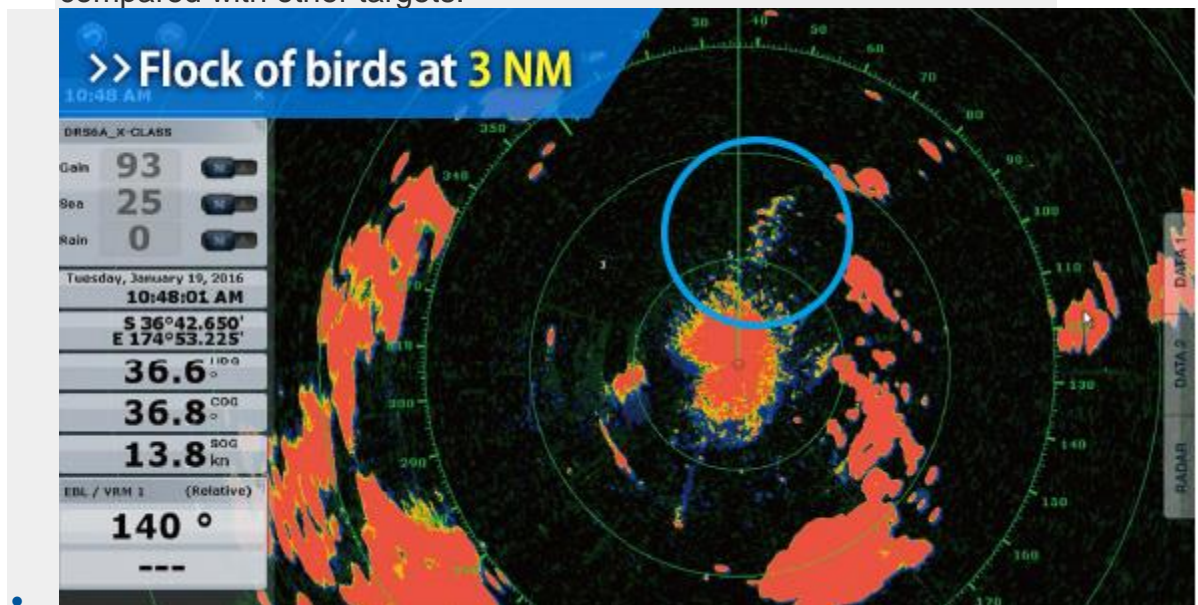
# Spot flocks of birds far away, incredible performance without compromise



**A** Stationary vessel **B** Moving vessel **C** Flock of birds  
Bird echoes at 5 NM, the echoes can be distinctly separated from the nearby vessel in motion. The vessel shows a straight and clear echo trail, unlike the bird echoes that are identifiable by their random motion.



At 4 NM the bird echoes are extremely clear, and distinctly visible compared with other targets.



With echo trails, it's possible to discern individual birds movements.

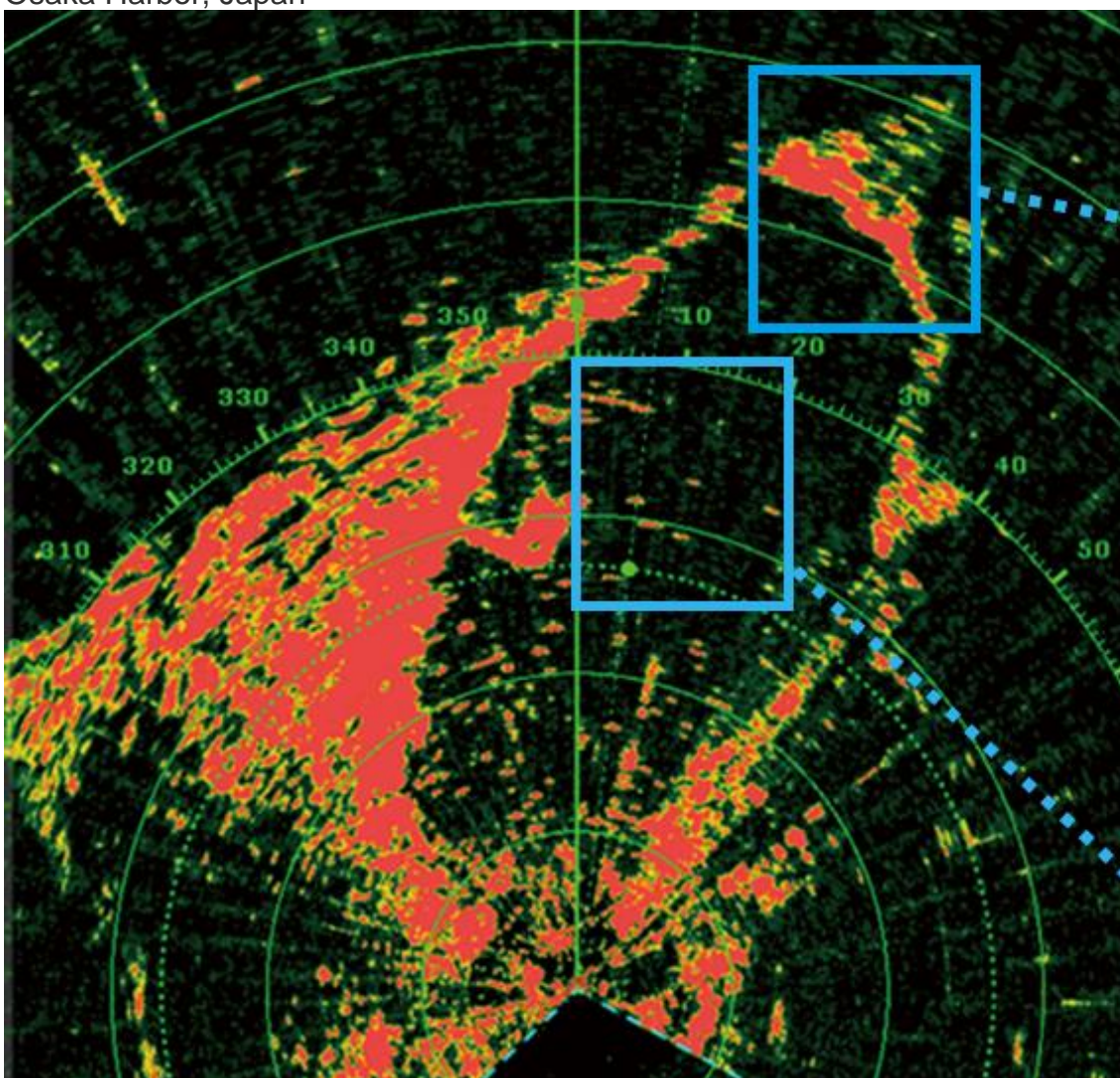
## Long and short range performance improved!

### Impressive long-range performance

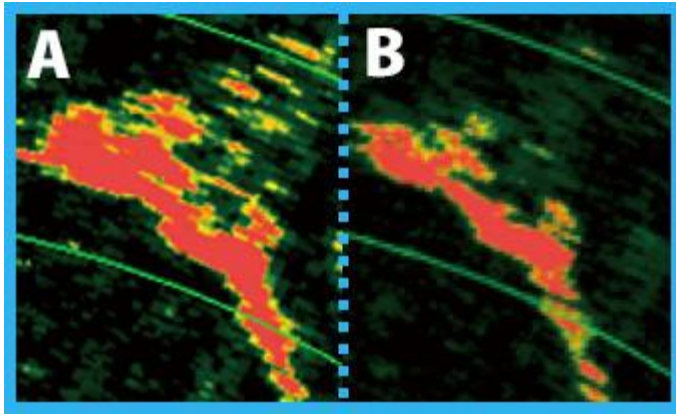
With an excellent long-range performance, you can even spot land masses in detail at great distances.



Osaka Harbor, Japan



Land 36 NM ahead



Sea 24 NM ahead

A DRS X-Class Series

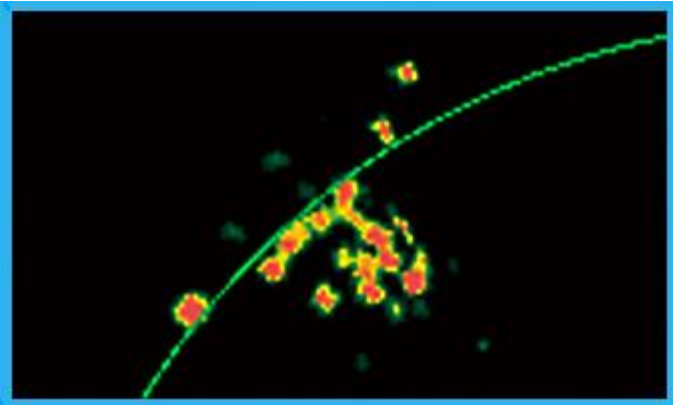
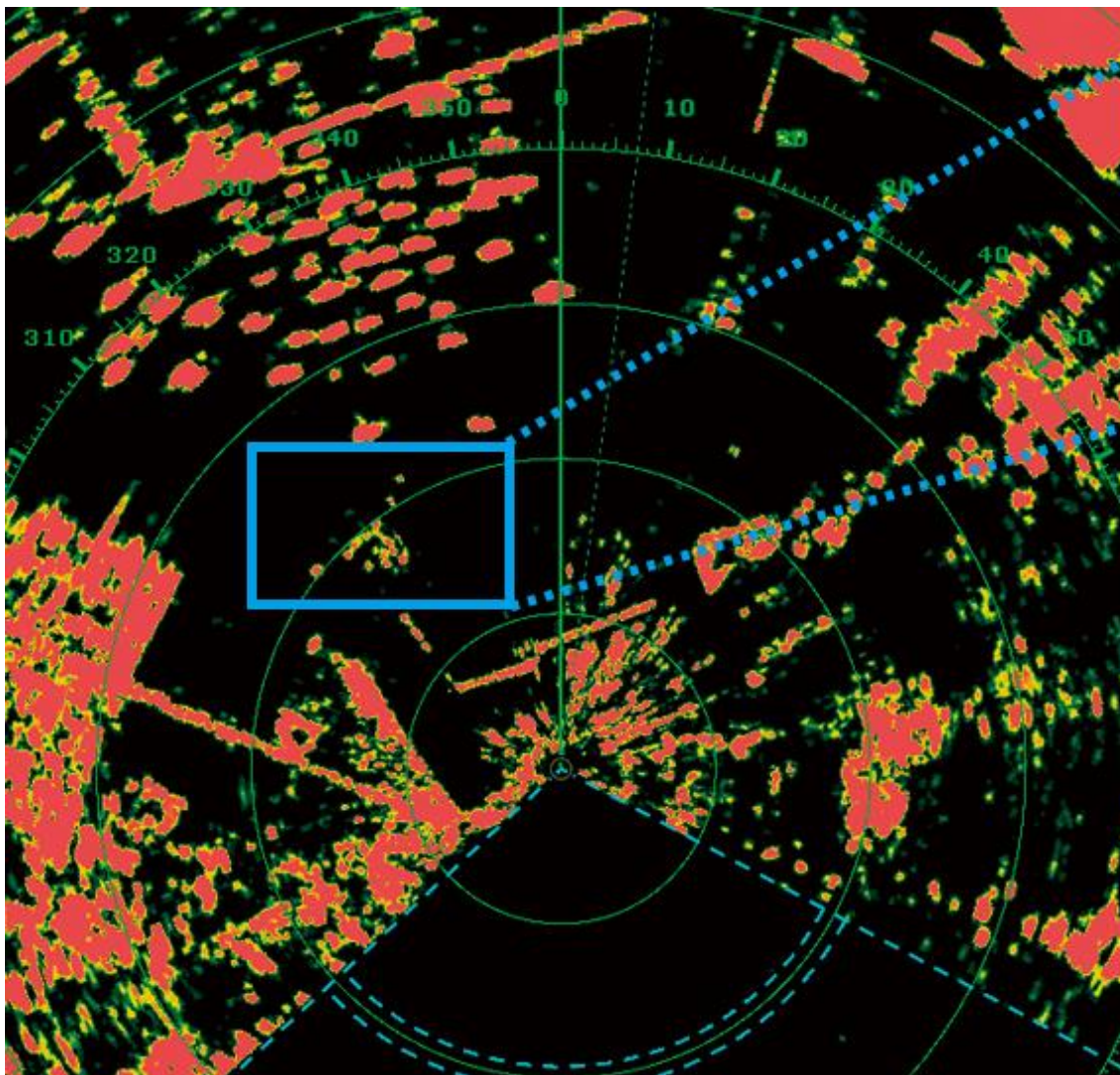
B Conventional Radar echo

## Excellent target separation at short range

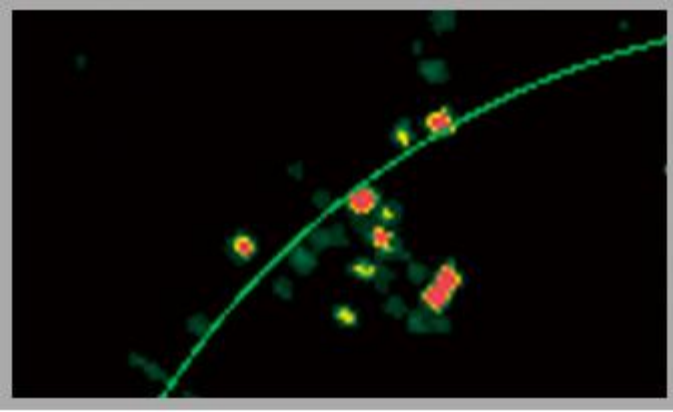
Improved short range detection gives you unprecedented target separation for use in identifying hazardous targets.



Small sailing dinghies



Dinghies at 3 NM



Conventional Radar echo

All the screenshots above are taken on 6kW output.