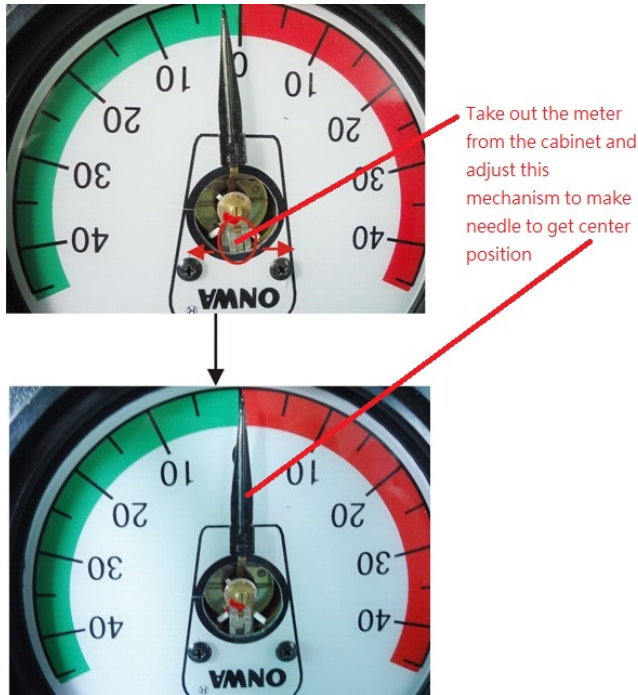


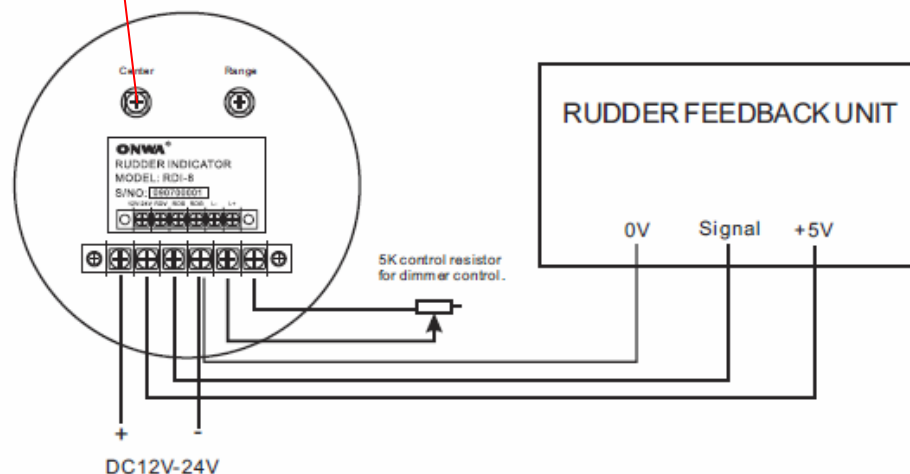
Adjustment of Onwa Rudder Indicator KRI80

- 1) After installation you have to check the needle on every Indicator is on Center position before connect the power. If you find a needle among the indicators is not in Center then you have to adjust the following mechanism.



- 2) Conduct power to Indicators. Place Rudder on zero degree (Mid-ship). Repeatedly adjust the "Center" adjustment on the rear panel of the KRI-80 to ensure all needles are in center position.

● RDI-8 of Rudder Wiring Diagram.



- 3) Place Rudder to full scale. Adjust the “Range” to read correct Rudder angle indication. For e.g. Full scale of Rudder is 35 degree so you have to adjust every rudder indicator to read 35 degrees.

● RDI-8 of Rudder Wiring Diagram.

