

ONWA[®]

MARINE ELECTRONICS



KP-8299 (8-inch)



KP-1299 (12-inch)

MODEL

KP-XX99

GPS Chart Plotter



K-CHART

Free detailed sea map



Support C-Map MAX

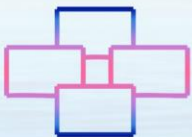


Compatible with Navionics+



GOTO TRACK NAVIGATION

Leads you back home



Multiple Display Modes



Proximity Waypoint Alarm



Perspective View



Different Color Palettes



SD Card System Update



Tide Table



Celestial

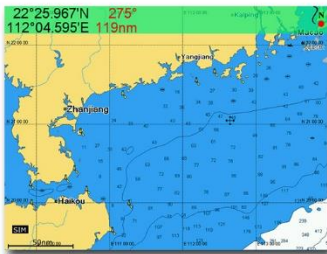


Display AIS Info

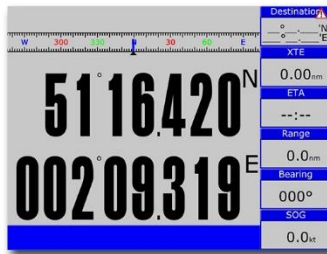
IP66
Ingress Protection

NMEA0183
NMEA Interface

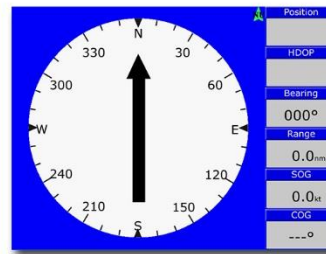
➤ DIFFERENT DISPLAY MODES



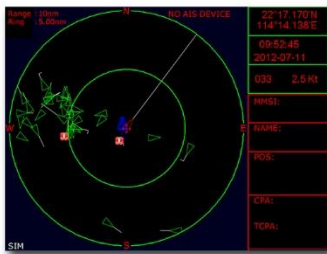
Plotter



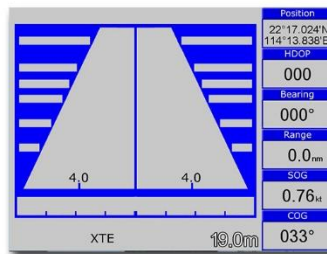
Navigation Data



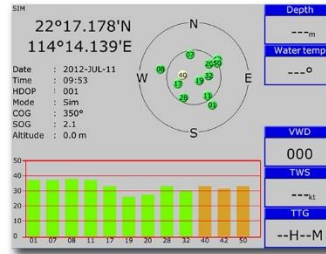
Compass



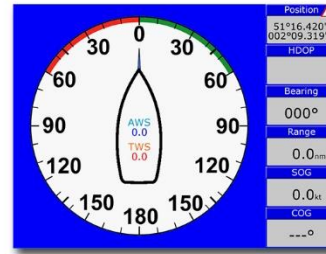
AIS



Highway



Satellite



Wind

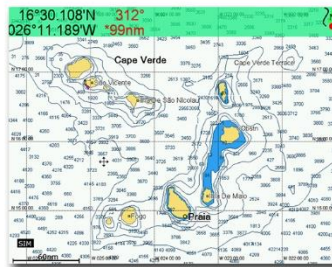
➤ GPS CHART PLOTTER

Compatible with the following mapping systems:



K-Chart Mapping System

ONWA Chart Plotters are compatible with K-Chart Mapping and displays worldwide Electronic Charts that users can use for FREE



C-Map Max

ONWA Chart Plotters are also compatible with C-Map Max showing Nautical Charts



Navionics+

ONWA Chart Plotters when used with Navionics+ charts shows Nautical Charts and Sonar Charts. Advance options also include: Highlight Shallow Area, Adjust Contour Density and Shallow Fishing Range

Standard
Accessory



KA-07

External GPS Antenna with 10m cable
(Specify when ordering)

PLOTTER CHARACTERISTICS

Waypoints/icons	12000 user waypoints with name, symbol 3 system waypoints: MOB, Start, Cursor 10 proximity waypoints
Routes	30 routes waypoint up to 170 points each, plus MOB and Track Navigation or GOTO Track modes
Tracks	8,000 points automatic track log;; 10 saved tracks (up to 8000 track points each) lets you retrace your path in both directions
Alarms	XTE, Anchor drag, arrival, speed, voltage, proximity waypoint, Timer and AIS (CPA and TCPA) alarm
Drawing	1000 Drawing Marks; 2000 Drawing Lines (40 points each); 1000 Drawing Place Name; 8 Colors for Drawing
Palette	Normal Daylight exposed to sunlight Night in dark environment NOAA paperchart colors Built-in Worldwide Tide data
Tides	Worldwide
Position format	Lat/Lon
Basemap	Worldwide
External Map	Compatible with K-Chart 2.0, K-Chart 3.0, C-Map Max and Navionics+
User data storage	Internal backup of user settings or external SD-card
Plot Interval	5secs to 60 mins or 0.01 to 10nm
Plotting scales	0.001 to 700nm
Perspective View	On/off (Available for C-Map only)
Celestial	Sunrise/Sunset Moonrise/Moonset

NMEA SENTENCE SUPPORTED

INPUT: (Auto scan Baudrate)
GGA, GLL, GSA, GSV, RMC, HDG, HDM, HDT
VTG, ZDA, MTW, VWR, VWT, MWD, VPW, VHW
TLL, TTM, VDO, VDM, GNS, MTA
RMA, DBT, DPT, MWV, BWC, XTE, ZDL, WPL, AAM, APB, BOD, RMB, DSC, MDA, RPM, XDR

OUTPUT:
Baudrate : Selectable 4800, 9600, 19200, 38400
GGA, GLL, RMC, GSA, GSV, AAM, APA
APB, BOD, BWC, BWR, DBT, DPT, HDT
MTW, RMB, TLL, VTG, WPL, XTE, ZDA
ZTG, ZDL, MWD, VPW, VWR, VWT
Outputs for autopilot:
APA, APB, BOD, XTE

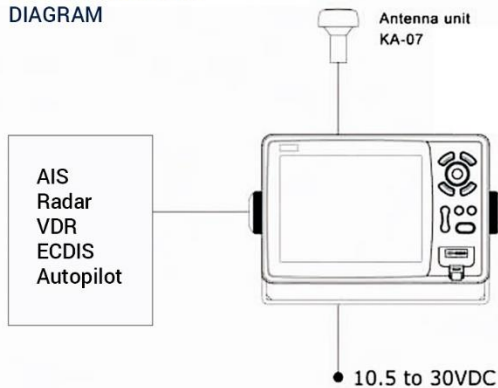
AIS INTERFACE

AIS Data: RS232 output VDO, VDM, GGA, GSA, GSV and VTG
AIS Input Baudrate: 38,400 from GPS Input Port

EQUIPMENT LIST

Display unit
Quick manual
Mounting Bracket
GPS Antenna (10m)
Standard Accessories Pack

INTERCONNECTION DIAGRAM



GPS RECEIVER CHARACTERISTICS

Receiver	50 parallel channel GNSS receiver continuously tracks and uses up to 50 satellites to compute and update your position
Acquisition time	Cold start: 29 seconds Hot start: 1 second
Update rate	1 second or 0.1 second selectable
Accuracy	Position: 3 meters(95%) without S/A Velocity: 0.1 meter/sec without S/A
SBAS	Supported
QZSS	Supported
Satellite System	Choice of 4 GNSS : GPS, Beidou, GLONASS, Galileo
Dynamics	Altitude: 18,000 m Velocity: 515 m/s
Datum	WGS 84 & User defined
Antenna	KA-07

GPS INTERFACE

GPS Data: RS232 input/output, NMEA 0183 V3.01 and V4.11
GPS Input Baudrate: Auto Scan (4800, 9600, 19200 and 38400)
GPS Output Baudrate: Selectable among 4800, 9600, 19200 and 38400

POWER SUPPLY

10.5 to 30VDC, current drain 1.0A at 12V

PHYSICAL

Size	KP-8299: 195.5mm(H)X 290mm(W)X 99.5mm(D) KP-1299: 267.9mm(H)X 363.8mm(W)X 106mm(D)
Weight	KP-8299: 1.7Kg KP-1299: 2.5Kg
Display	KP-8299: 8-inch Color TFT dayview LCD, 800x600 pixels KP-1299: 12.1-inch Color TFT dayview LCD, 800x600 pixels
Waterproofing	Display unit: IP66 Antenna unit: IP66
Temperature range	Display unit: -15°C to +55°C Antenna unit: -25°C to +70°C

DIMENSIONS (DISPLAY UNIT)

