

ONWA[®]

MARINE ELECTRONICS



MODEL

KP-38S

5-inch GPS Chart Plotter with Powerbank Supply Capability

***Note: NO NMEA DATA**



K-CHART

Free detailed sea map



Support C-Map MAX



Compatible with Navionics+



GOTO TRACK NAVIGATION

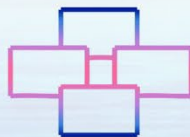
Leads you back home



POWERBANK SUPPLY CAPABILITY
Standard Supply
(Not included in the set)



Screen timeout when not in use
for lesser power consumption



Multiple Display Modes



Proximity Waypoint Alarm



Different Color Palettes



SD Card System Update



Perspective View



Tide Table

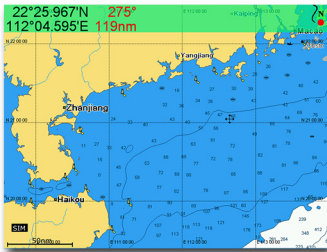


Celestial

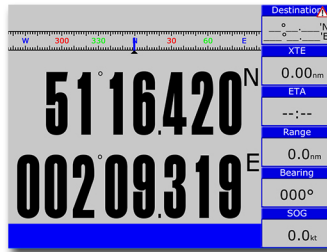
IP66

Ingress Protection

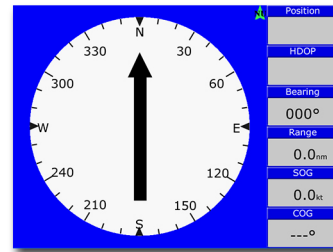
▶ DIFFERENT DISPLAY MODES



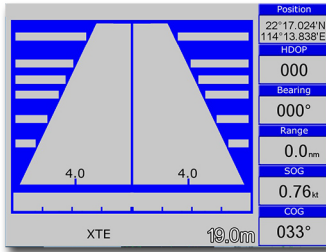
Plotter



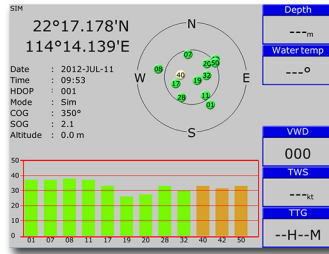
Navigation Data



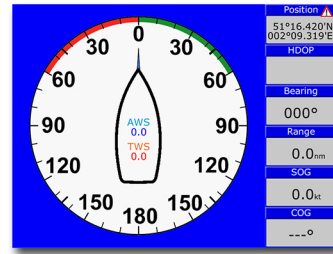
Compass



Highway



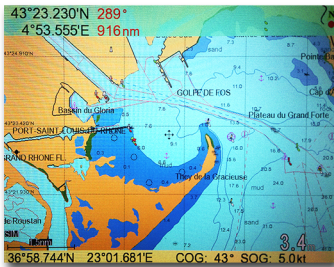
Satellite



Wind

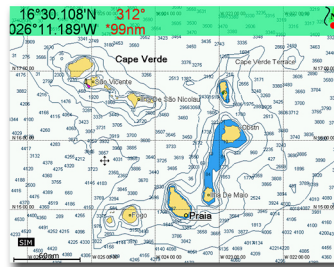
▶ GPS CHART PLOTTER

Compatible with the following mapping systems:



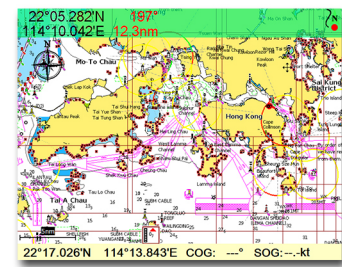
K-Chart Mapping System

ONWA Chart Plotters are compatible with K-Chart Mapping and displays worldwide Electronic Charts that users can use for FREE.



C-Map Max

ONWA Chart Plotters are also compatible with C-Map Max showing Nautical Charts



Navionics+

ONWA Chart Plotters when used with Navionics+ charts shows Nautical Charts and Sonar Charts. Advance options also include: Highlight Shallow Area, Adjust Contour Density and Shallow Fishing Range

Standard Accessory



GPS Patch Antenna
with 4m cable (SMA connector)
Ingress Protection IP66

Optional Accessory



KA-07
External GPS Antenna
with 10m cable
(Specify when ordering)

PLOTTER CHARACTERISTICS

Waypoints/icons	12000 user waypoints with name, symbol 3 system waypoints: MOB, Start , Cursor 10 proximity waypoints
Routes	30 routes waypoint up to 170 points each, plus MOB and Track Navigation or GOTO Track modes
Tracks	8,000 points automatic track log;; 10 saved tracks (up to 8000 track points each) lets you retrace your path in both directions
Alarms	XTE, Anchor drag, arrival, speed, voltage, proximity waypoint, Timer and AIS (CPA and TCPA) alarm
Drawing	1000 Drawing Marks; 2000 Drawing Lines (40 points each); 1000 Drawing Place Name; 8 Colors for Drawing
Palette	Normal Daylight exposed to sunlight Night in dark environment NOAA paperchart colors Built-in Worldwide Tide data
Tides	Lat/Lon Worldwide
Position format	Compatible with K-Chart 2.0, K-Chart 3.0, C-Map Max and Navionics+
Basemap	Internal backup of user settings or external SD-card
External Map	5secs to 60 mins or 0.01 to 10nm
User data storage	0.001 to 700nm
Plot Interval	On/off (Available for C-Map only)
Plotting scales	Sunrise/Sunset Moonrise/Moonset
Perspective View	
Celestial	

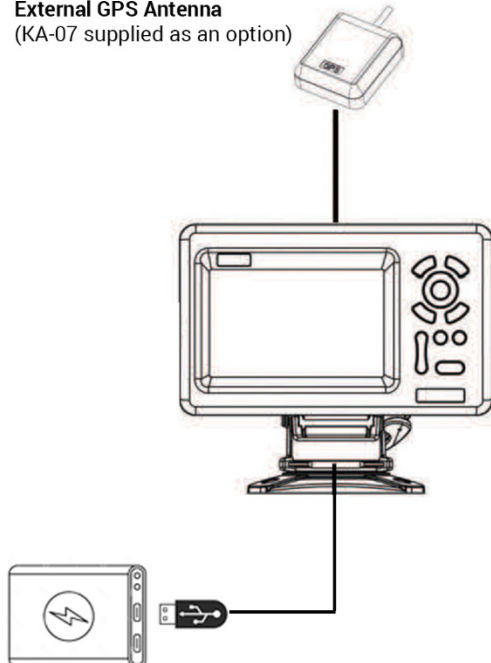
PHYSICAL

Size	169(H)mm X 198.1mm(W) X 77mm(D)
Weight	0.6Kg
Display	5-inch Color TFT dayview LCD 800x480 pixels
Waterproofing	Display unit (front panel): IP66 Antenna unit: IP66
Temperature range	Display unit: -15°C to +55°C Antenna unit: -25°C to +70°C

***Note: NO NMEA DATA**

INTERCONNECTION DIAGRAM

External GPS Antenna
(KA-07 supplied as an option)



*Power bank is NOT included in the standard accessories

GPS RECEIVER CHARACTERISTICS

Receiver	50 parallel channel GNSS receiver continuously tracks and uses up to 50 satellites to compute and update your position
Acquisition time	Cold start: 29 seconds Hot start: 1 second
Update rate	1 second or 0.1 second selectable
Accuracy	Position: 3 meters(95%) without S/A Velocity: 0.1 meter/sec without S/A
SBAS	Supported
QZSS	Supported
Satellite System	Choice of 4 GNSS : GPS, Beidou, GLONASS, Galileo
Dynamics	Altitude: 18,000 m Velocity: 515 m/s WGS 84 & User defined GPS Patch Antenna
Datum	
Antenna	

POWER SUPPLY

Powerbank Supply Standard
(Can use 12-24VDC with 12/24V to 5V converter (specify when ordering))

WORKING HOURS

14 hours (with a 20,000mA power bank with max. LCD brightness)

EQUIPMENT LIST

Display unit
Quick manual
Mounting Bracket
GPS Patch Antenna with 4m cable (SMA connector)
Standard Accessories Pack

OPTIONAL ACCESSORIES

GPS antenna KA-07



KA-07
GPS Antenna

DIMENSIONS (DISPLAY UNIT)

