

ONWA[®]

MARINE ELECTRONICS



MODEL

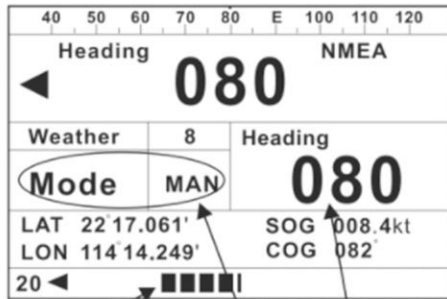
KAP-866

Marine Autopilot System

- Comes with high accuracy 9-axis electronic heading and GPS Heading Sensor KA-GC9A as standard
- Applies the most advance PID controller (proportional–integral–derivative controller)
- No more “Rudder” and “Counter Rudder” adjustment is needed
- Automatic calculation against Wind and Current on sea (Auto Trim)
- Suitable for most kind and size of vessels
- Real time GPS information display (Lon/Lat, SOG and COG)
- Steer your boat in almost a straight line in any weather condition
- Support Solenoid and Reversing Pump (Power Drive required)

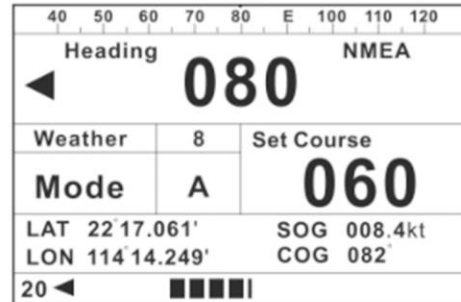
▶ DISPLAY MODES

Standby Mode

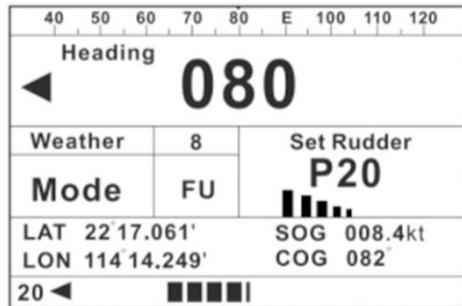


Rudder Angle Field Command Field
Mode Field

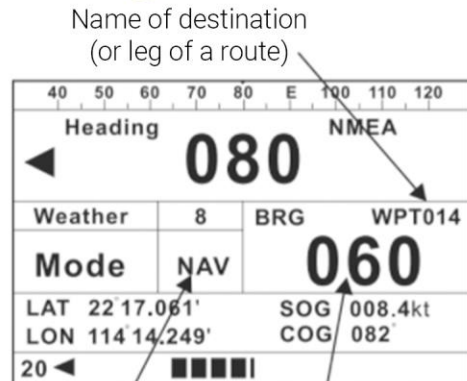
Auto Mode



Follow-up Mode



Navigation Mode



Name of destination (or leg of a route)
Navigation mode Heading to destination (or to a leg of the route)

STANDARD ACCESSORIES

- Control Unit KAP-866 with mounting



- KA-GC9A Heading Sensor with 10m cable



- 30m cable from control to rudder feedback
- 2m power cable
- Standard accessories
- Quick Manual

- Light Duty Rudder Feedback Unit (KRF-36)
(If heavy duty is needed must specify when ordering)



- 4 ways plastic marine ratchet mount for KA-GC9A



GENERAL

Heading Reference	Fluxgate, Magnetic Compass, NMEA
Heading Sensor	KA-GC9A (standard) or KCS-20_0183 (optional)
Headin Resolution	1°
Course Detection	0.1°

OUTPUT/INPUT (IEC61162)

Input	
Dual NMEA0183 Inputs Support	APA, APB, BOD & XTE, HDG, HDT, HGM, RMC
Baud Rate	4800 X1, auto baudrate X1 (scan among 4800, 9600, 19200 and 38400)
Output	
One NMEA0183 output Support	HDG, HGT, HGM (selectable from menu)
Baud Rate	4800, n, 8, 1

OPTIONAL ACCESSORIES



KCS-20_0183
Digital Compass



KRI-80
Rudder Indicator



RT-580
Hand Remote Control



RW-250
Electronic Steering Helm



LSD-50P-100FID2
Power Drive for Reversing Pump

Reversing Pump
(Power Drive needed)



Solenoid Pump



Hydraulic Pumps

Pump for Autopilot (KAP-866) to be installed on a boat that only has hydraulic hand steering



KGN-200
Gyro to NMEA Converter



KA-GC9A
9-axis electronic compass with built-in high accuracy GPS module



KRF-35
Heavy-duty Rudder Feedback Unit



KRF-36
Light-duty Rudder Feedback Unit

ENVIRONMENTAL CONDITIONS

Ambient Temperature	-15°C~70°C
Waterproofing	
Display Unit	IPX5
Heading and GPS Sensor	IPX67 for KA-GC9A
Rudder Feedback	IPX7

ELECTRICAL PARAMETERS

Operating Voltage	10 to 30VDC
Drive Output	10 Amps max
Power Consumption	Standby mode 0.4 Amps, Auto mode, 1.0 Amps Peak for control unit only

DISPLAY

Sunlight Viewable contrast LCD	
LCD size	95(W) x 63(H)mm, 240X160 dots

INTERCONNECTION DIAGRAM

