



# AP47C

## COLOUR AUTOPILOT

Now with colour LCD, simplified setup and installation, the AP47C offers the same easy to use functionality and compact styling as the AP47, TMQ's most popular small boat autopilot.

**TMQ**  
*Trusted Marine Quality*



## Reliable operation and performance

### An economical Autopilot with professional features

TMQ Autopilots are well known for their accuracy and reliability, and the AP47C is no exception.

Ideal for smaller vessels or tighter spaces, the colour AP47C offers a bright colour LCD screen, very simple setup and calibration, and a range of accessories to extend its functionality. Available in two models, with or without electronic compass included.

## FEATURES



Waypoint steering when connected to a GPS plotting system.



Greater daylight readability with bright colour LCD and simple operation.



**NEW** Toughened glass



**NEW** Slimline casing, great for limited space.



Use as a stand alone system or integrate with other equipment.



International dealer network, access spares or service anywhere.

## STANDARD INCLUSIONS



AP47C Control unit



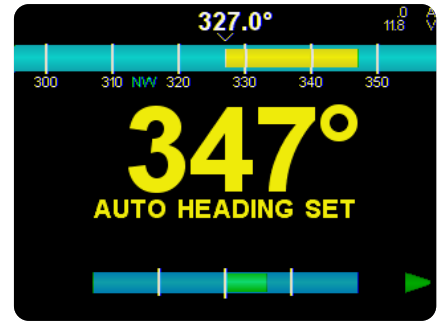
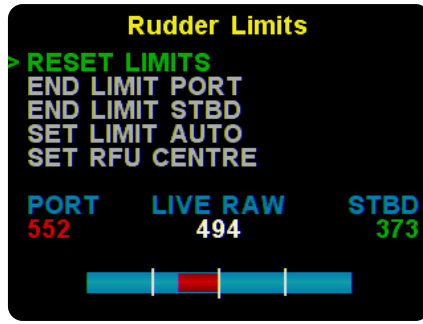
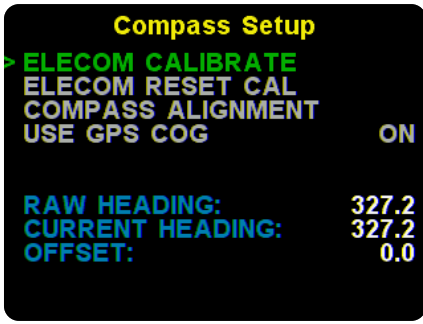
Electronic Compass Elecom/ElecomG



Additional GPS cable supplied for non-RFU models



Operation manual and Quickstart guide



## Easily navigate through system setup or diagnostics with intuitive menu.

### DISPLAY MODES

#### Manual Mode

The autopilot display unit shows the current magnetic heading. The vessel is under manual steering control and does not apply automatic steering control.

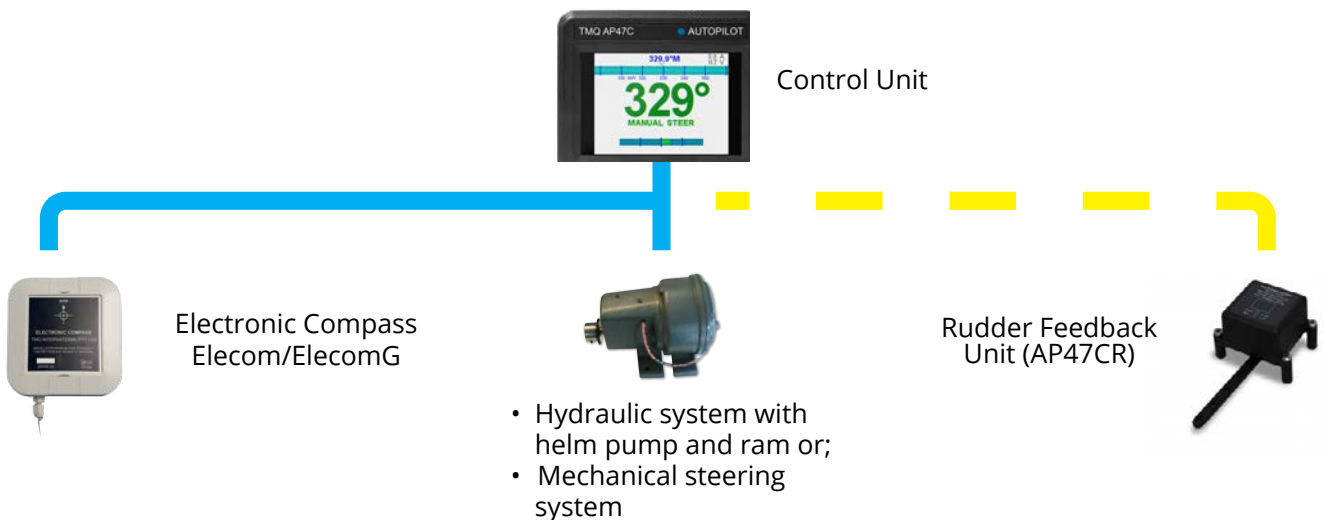
#### Auto Mode

The autopilot will maintain your vessel on any desired magnetic course. This course can be set from the display unit.

#### GPS Mode

When receiving information from a GPS the autopilot can steer a vessel to a precise latitude and longitude, through any number of desired course changes.

### CONNECTION DIAGRAM

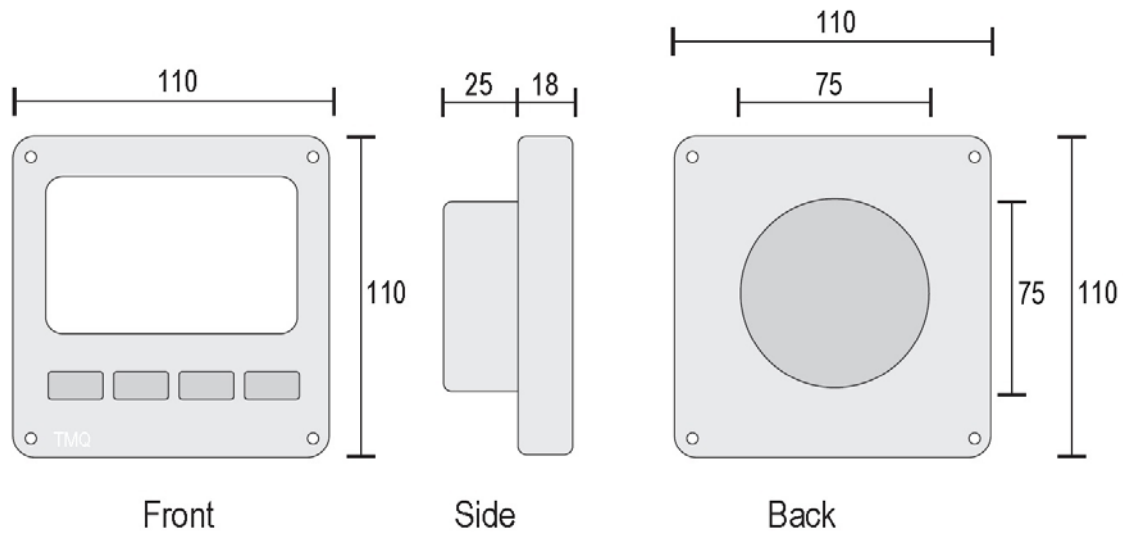


### ACCESSORIES



Need more information on Hydraulic Pumps?  
Contact your TMQ Sales Representative.

## DIMENSIONS



## SPECIFICATIONS

VOLTAGE:	12/24 Volts DC	RUDDER RATIO:	0.1:1.0 to 1.0:1.0
CURRENT:	Average - 0.5 amps	RUDDER LIMITS:	Adjustable
CONTROLS:	4 push button	OFF COURSE ALARM:	Adjustable (Default 45 degrees)
DISPLAY:	LCD Colour	NAV. SIGNAL:	NMEA 0183
COURSE DETECTION:	Better than 1 degree	SENSITIVITY:	0 to 10 degrees

## SUPPORT

Benefit from over 40 years of local product support. TMQ equipment is backed with a 2 year warranty\*. Warranty is extended to 3 years when the item is registered with TMQ.

